

ANDALUCIA PUD PLAT 1

LYING IN SECTIONS 29, 30 AND 32, TOWNSHIP 44 SOUTH, RANGE 42 EAST, PALM BEACH COUNTY, FLORIDA,
BEING A REPLAT OF ALL OF TRACTS 42, 43 AND 53 AND A PORTION OF TRACTS 38, 41, 44, 54, 59 AND 60, BLOCK 28, THE PALM BEACH FARMS COMPANY
PLAT NO. 3 AS RECORDED IN PLAT BOOK 2, PAGES 45 THROUGH 54, INCLUSIVE, PUBLIC RECORDS OF PALM BEACH COUNTY, FLORIDA.

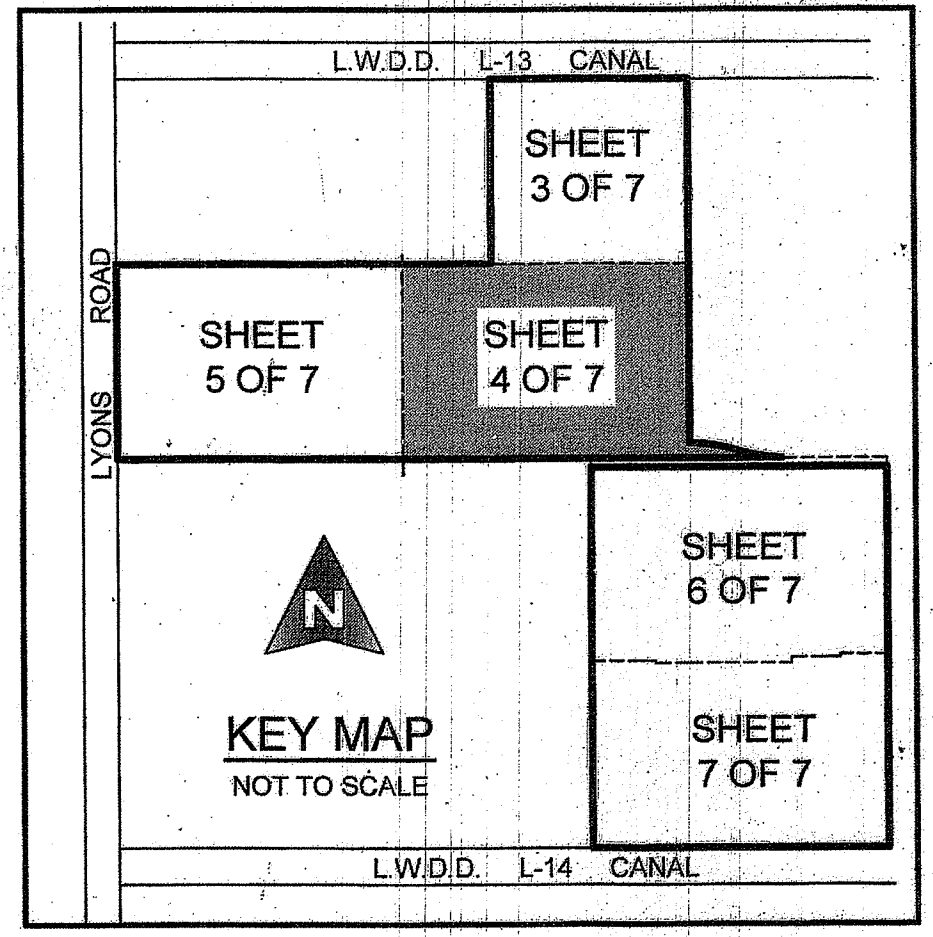
196

COUNTY OF PALM BEACH)
STATE OF FLORIDA) SS
THIS PLAT WAS FILED FOR RECORD AT)
M. THIS) DAY OF)
RECORDED IN PLAT BOOK NO.)
ON PAGE) THRU)
SHARON R. BOCK,
CLERK AND COMPTROLLER
BY:) D.C.

TRACT 39, BLOCK 28
PALM BEACH FARMS CO. PLAT NO. 3
(PLAT BOOK 2, PAGE 45)
S. LINE OF TRACT 39, BLOCK 28
12' F.P.L.E. (O.R.B. 5908, PAGE 1806)
30' INGRESS/EGRESS EASEMENT
(O.R.B. 3806, PAGE 1505)
N89°59'31"E 1249.60' (OA)
S00°00'29"E 624.36' (OA)
W. LINE OF TRACT 38, BLOCK 28
AND E. LINE OF TRACT 39, BLOCK 28
N=827507.8498
E=922329.4289

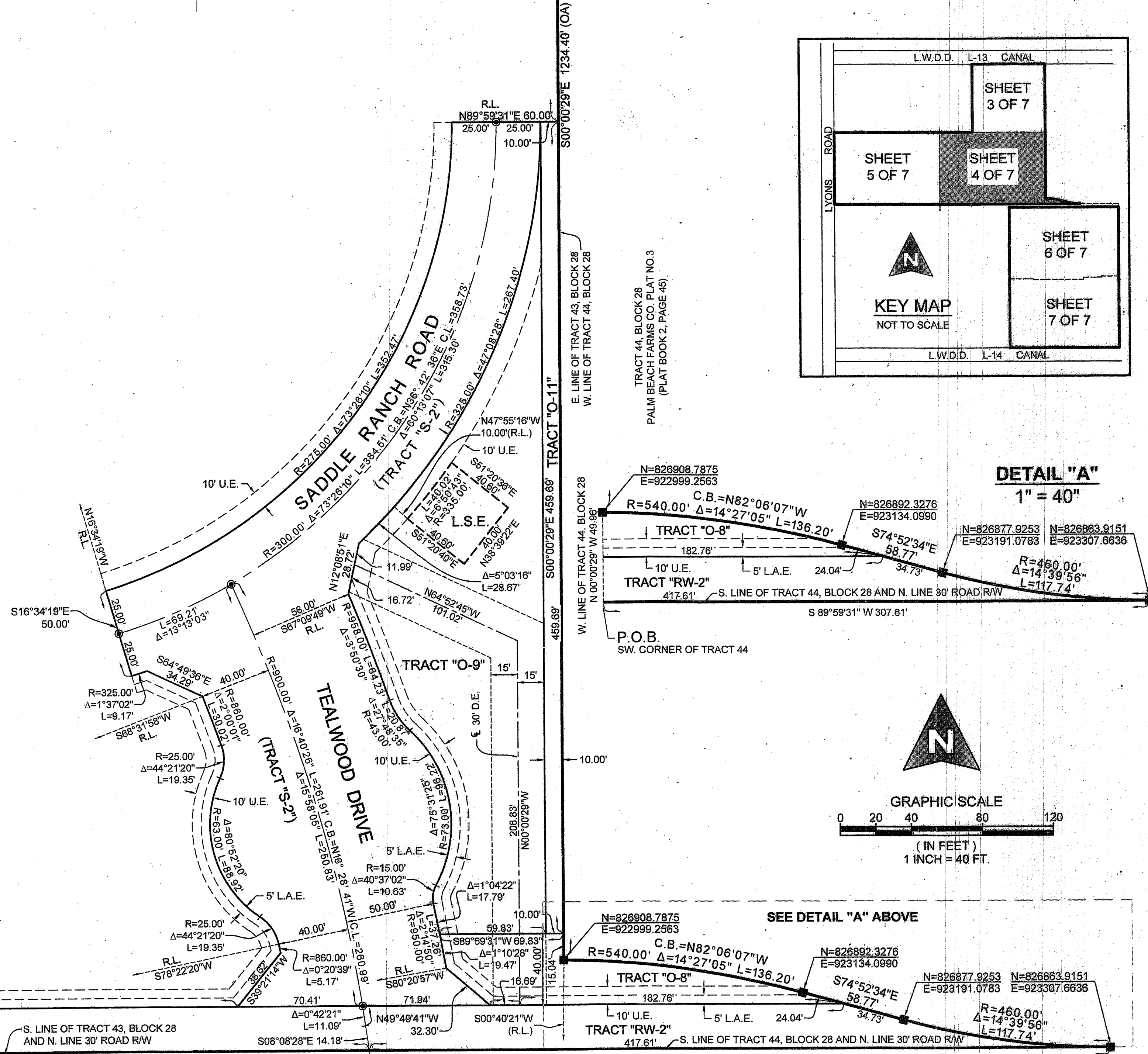
MATCH TO SHEET 3

S. LINE OF TRACT 37, BLOCK 28

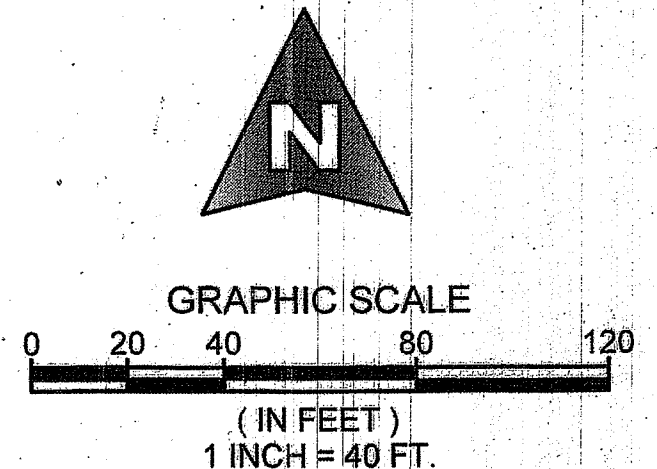


MATCH TO SHEET 5

TRACT "FD-2"



DETAIL "A"
1" = 40'

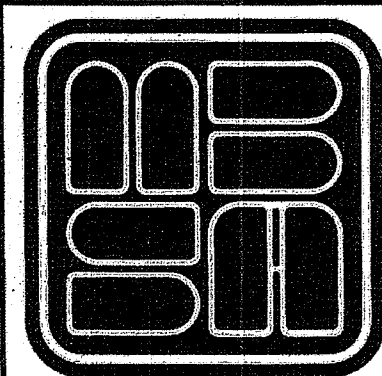


SEE DETAIL "A" ABOVE

COORDINATE NOTE:
STATE PLANE COORDINATES SHOWN ARE GRID DATUM,
NAD 83 1990 ADJUSTMENT, FLORIDA EAST ZONE,
COORDINATE SYSTEM 1983 STATE PLANE,
TRANSVERSE MERCATOR PROJECTION
LINEAR UNIT = US SURVEY FEET
ALL DISTANCES ARE GROUND
SCALE FACTOR = 1.000022328
GROUND DISTANCE X SCALE FACTOR = GRID DISTANCE
S 00°00'29"E (PLAT BEARING) -00°56'20" COUNTER-CLOCKWISE ROTATION
S 00°56'49"E (GRID BEARING) PLAT TO GRID
THE EAST LINE OF TRACTS 38 AND 43, BLOCK 28, PALM BEACH FARMS
COMPANY PLAT NO. 3 (PLAT BOOK 2, PAGES 45-54)

MATCH TO SHEET 6

SHEET 4 OF 7



**MICHAEL B. SCHORAH
& ASSOCIATES, INC.**
1850 FOREST HILL BLVD., SUITE 206
WEST PALM BEACH, FLORIDA 33406
EB# 2438 TEL. (561) 968-0080 FAX. (561) 642-9726 LB# 2438

ANDALUCIA PUD PLAT 1